

# BANC3

## BANC3, Inc.

Certified 8(a)/MBE/SBE/DBE  
GSA Schedule Holder

quality, time, price... banc on us

### Highlights

- DUNS Rating: 92
- Winner of the DoD - NEMSCOM 2006 Contract Employee of the Year Award.

### GSA Schedules

- Engineering Services, GSA Schedule 871  
Contract #: GS23F0194S
- Environmental Services, GSA Schedule 899  
Contract #: GS10F0161R
- IT Services, Federal Supply Schedule 70  
Contract #: GS35F0290R

### Contract Vehicles

- NAVFAC Mid-Atlantic – Engineering Contract
- Veterans Affairs – Engineering Contract

### BANC3, Inc.

379 Princeton-Hightstown Rd.  
Bldg 3, 2<sup>nd</sup> Floor  
Cranbury, NJ 08512  
(609) 448-6776 phone  
(609) 448-5590 fax  
www.banc3.com

... offices in other locations ...

## Services

### → LAND DEVELOPMENT

Site Plan Development  
Land Use Planning  
Permitting  
Land Survey  
Utility Designs

### → ENVIRONMENTAL ENGINEERING

Regulatory Compliance  
Site Assessments  
Environmental Investigations  
Remedial Design & Oversight  
Water & Wastewater

### → BUILDING SERVICES

Structural  
Mechanical  
Electrical  
Plumbing  
Fire Protection

### → PROJECT MANAGEMENT

Value Engineering  
Construction Management  
Scheduling  
Estimating  
Highway Resident Engineering

## Resources

BANC3 has an experienced staff of over 30, including:

- professional engineers
- licensed surveyors
- environmental specialists
- project managers
- CAD draftsmen
- survey crew
- NICET construction inspectors
- support staff

## BANC3 Partial Client List

DOD	NJEDA
EPA	NJDPMC
USPS	DRPA
DOT-FHWA	NJHMFA
FAA	NJSCC
GSA	NYCSCA
NJ Transit	MTA
Lockheed Martin	JP Morgan Chase
URS Corporation	HNTB
STV	Turner Construction
Tetra Tech	Parsons Brinckerhoff
Parsons	The Louis Berger Group
AECOM	Heery International
Burlington County	Mercer County
Monmouth County	Ocean County



# PROJECT HIGHLIGHTS

## Naval Weapons Station Earle, NJ

BANC3 provided Quality Control Management (QCM) services for the Three Explosive Truck Holding Yards project at Naval Weapons Station Earle, Colts Neck, NJ.

Under this task order, BANC3 was responsible for the QCM aspects of: Construction of three explosive truck holding yards; Mobilization, site preparation, and site survey; Overhead and underground grounding system; Grade, form, set re-bar and pour concrete for three holding yards; Installation of asphalt road and parking areas; Coordination with the local water utility for fire connection; Installation of fire alarm system and security fencing; Stormwater management swales; Site restoration, seeding, fertilizer and lime; Operation and maintenance manual submittals; Demobilization.

The responsibilities included implementing and managing the three phases of quality control; ensured compliance with contract requirements, SOPs, and other guidance documents; monitored work for compliance with the Quality Control Plan and other contract and technical documents; reviewed submittals and maintain the submittal register; maintained daily logs and reports; ensured construction quality control; and ensured subcontractor/vendor quality control compliance.



## U.S. Postal Service

BANC3 performed a detailed survey of the U.S. Post Office buildings in Bayville and Paterson, NJ and Bronx, NY. For the Bayville site, a subdivided lot was tied into the overall property survey by meats and bounds. The field work included outbound and topographical surveys, the setting of monuments, and the establishment of control benchmarks. All work was completed in accordance with ALTA/ACSM land title survey requirements. BANC3 surveying services included outbound property survey by meats and bounds. The survey project scope included the as-built survey of existing utilities together with a detailed topographic survey to develop existing contours.

For the Paterson site, prepared topographic survey and utility survey, determine the elevation of utility inverts and prepared topo and utility plans using AutoCAD 2004 for the proposed improvements at the site.



## EPA Region III

BANC3 has been providing land surveying and other environmental support services to EPA Region III for the development, review and implementation of area contingency plans pursuant to Section 4202 of the OPA of 1990 to support both Regional and Headquarters workgroups involving OPA and regional response activities.



## West Point – Michie Stadium

BANC3 has been providing engineering design services in support of the Michie Stadium Architectural/Structural Restoration at USMA, West Point, NY. The scope of work included the site work consisting of grading, drainage, security fencing, retaining walls, concrete paver walking surface, and illumination lighting, emergency lighting and connection for the replacement of concession stands, mid west and upper west stands, north bleachers, south and west concourses, ticket booths, and gates.

## Federal Highway Administration – WLFHD

BANC3 has been providing design and drafting support services for the Western Federal Lands Highway Division (WFLHD) of the Federal Highway Administration (FHWA) in the facility located in Vancouver, WA. This is a 5-year Indefinite Delivery/Indefinite Quantity (IDIQ) contract. The scope of work includes:

- Preparing complete sets of drawings of test equipment from layouts or sketches to be manufactured. Several cross-sectional and subassembly drawings are required
- Preparing final construction drawings for floodgates, navigation locks, dams, bridges, culverts, levees, channel excavations, dikes and berms based on precedents, drafting standards, and established practices
- Preparing boring profiles, typical cross-sections, and land profiles
- Delineating related topographical details as required
- Preparing final drawings for street paving and widening or for water and sewer lines having complex trunk lines
- Laying out plan, profile and detail appurtenances



# PROJECT HIGHLIGHTS

## Dept. of Veterans Affairs, Tampa – Engineering Services

BANC3 is providing technical/design services to include but not limited to preparation of contract drawings, specifications, cost estimates, and complete construction period services for the design of multiple projects primarily in the mechanical discipline, but encompassing multiple construction disciplines to include but not limited to architectural, civil, electrical, structural, environmental, and fire safety areas. Services are being provided to the Department of Veterans Affairs (VA), JAHVAH complex located in Tampa FL, and any other off-site medical facilities under JAHVAH jurisdiction.



## NAVFAC Mid-Atlantic – Environmental Services

BANC3 is providing environmental consulting services in as part of an Indefinite Quantity Contract for Independent Monitoring of Asbestos, Lead, Mold, Hazardous Materials and Radon Projects at Various Activities throughout the Naval Facilities Engineering Command, Mid-Atlantic's Area of Responsibility. The NAVFAC Mid-Atlantic AOR includes the entire mid-Atlantic and northern-Atlantic regions including but not limited to Virginia, North Carolina, West Virginia, Maine, Vermont, New Hampshire, Massachusetts, Rhode Island, Connecticut, New Jersey, New York, Pennsylvania and Delaware. The primary elements involved



are asbestos, lead, mold, radon, hazardous materials, and indoor air quality that pertain to safety, renovation and demolition projects and required third party monitoring. Emphasis is on hazardous testing, analysis, assessment and the inspection/monitoring of various abatement projects, etc. Additional industrial hygiene, environmental, and safety related consultation and services are being provided on an as needed basis. The duration of the contract is for one (1) year with four (4) additional one (1) year option periods.

## East Side Access Project – MTA

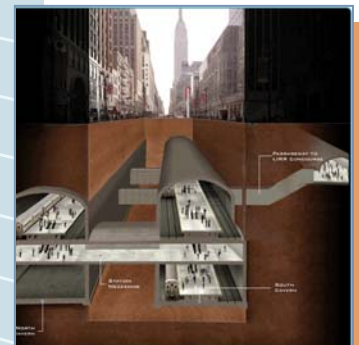
The East Side Access project will connect the Long Island Rail Road's (LIRR) main and Port Washington lines in Queens to a new LIRR terminal beneath Grand Central Terminal in Manhattan. As part of the project, new tunnels will be constructed from the LIRR Mainline tracks in Queens, under Amtrak's Sunnyside Yard and LIRR's Existing Rail Yard, connecting to the existing 63rd Street Tunnel just beyond Northern Blvd. In Manhattan, new tunnels will be bored from the existing bellmouth structure at Second Avenue and 63rd Street, west and then south, under Park Avenue and Metro-North Railroad's four-track right of way. At Grand Central Terminal, a new passenger concourse will be constructed in space currently occupied by Metro-North's Madison Avenue Yard. Eight tracks and four wide platforms will be constructed, along with mezzanines and concourses, beneath Park Avenue at an elevation below GCT's existing lower level. Scheduled for completion in 2013, the project has a budget of \$6.3 billion dollars.



BANC3 has been providing engineering design and CAD drafting staff augmentation services for positions such as engineers, designers, CAD draftsman, and other disciplines per the project requirements.

## THE Tunnel (Trans-Hudson Express) – NJ Transit

This \$8 Billion dollar project includes a track connection to the Northeast Corridor from the Main/Bergen/Passaic Valley lines, a new two-track rail tunnel beneath the Hudson River and a new rail station underneath 34th Street in midtown, Manhattan. The series of transit improvements include a new two-track commuter rail tunnel under the Hudson River, a new track and platform capacity near Penn Station New York, and other investments, such as yards and signals to support the new tunnel.



BANC3 has been providing engineering design and CAD drafting staff augmentation services for this project. Positions filled include engineers, designers, CAD draftsman, and other disciplines per the project requirements.



# PROJECT HIGHLIGHTS

## Department of Defense – Ft. Dix, NJ

BANC3 is a part of the Design/Build Contract for the Department of US Army for a Controlled Humidity Storage Facility at the Fort Dix Army Reservation, NJ. This acquisition is to construct a 60,600 square foot, one-story controlled humidity warehouse with an attached administration area. The structure will be a concrete frame with pre-cast concrete exterior wall panels, reinforced concrete floor, and reinforced concrete roof. The project includes electric, water, communications, and gas utilities. Entire warehouse will be equipped with a fire protection system. The administrative area will have heating, ventilating, and air conditioning systems. Force protection measures will be incorporated into the structure and site.

BANC3 has been providing topographic survey, construction layout, and engineering design and drafting support services for this army reservation project.



## Dept. of Veterans Affairs – Illiana HCS, IL

BANC3 was authorized by Veterans Administration Illiana Health Care System to prepare the Environmental Impact Statement and Environmental Site Assessment. The purpose of this study is to evaluate the potential environmental concerns on the parcel of the land to be improved. The study area is 5.795 acres located on the VA property of 220 acres. Based on our investigations, the findings and recommendations were included in the reports.



## FAA - Philadelphia International Airport

BANC3 performed field surveys to locate the delineated wetlands within and around the perimeter of the Philadelphia International Airport for inclusion in the NEPA documentation for the Airport Runway Capacity Enhancement Program. There are approximately 80 individual wetlands ranging in size from 0.1 acre to 14.0 acres that require delineation and survey. These wetlands are located within the Airport infield area, between Route 291 and I-95 and between Hog Island Road and the Delaware River from the western end of the runways to the eastern end of the runways. After locating the delineated wetlands, prepared plot plans of the surveyed points in AutoCAD 2004 format and establish perimeter boundaries of the wetlands, and created ESRI shape files for the GIS mapping.

## U.S. Army Corps of Engineers – Pea Patch Island, DE

BANC3 provided survey and drafting as-built plans of the rock sea wall along the Delaware River constructed on the east side of Pea Patch Island, Delaware north of historic Fort Delaware. BANC3 recovered survey control on site and compared cross-section data measured in February 2005 along the sea wall and the existing ground and portions of the water way for completion of the as-built plans to be submitted to the U.S. Army Corps of Engineers.

BANC3 is experienced in all facets of surveying including coastal surveys. With multi-state licenses our Licensed Land Surveyor brings extensive experience working with historic sites and the US Army Corps of Engineers. Including Fort Delaware, detailed mapping was performed for the reconstruction of historic Fort McHenry in Baltimore, Maryland as well as boundary (cadastral) surveys along the Delaware River for the Port of Wilmington, north of the Delaware Memorial Bridge in conjunction with the Channel Dredging spoils site construction.



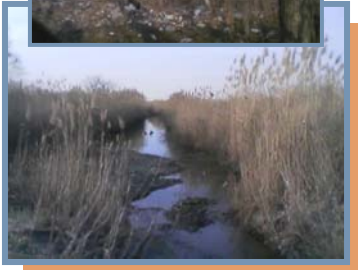


# PROJECT HIGHLIGHTS

## U.S. Army Corps of Engineers – Former Raritan Arsenal

BANC3 has been providing land surveying and other environmental support services to Tetra Tech EC, USACE, NY District and USACE, Huntsville Center for the development, review and implementation of area contingency plans pursuant to the Military Munitions Response Program (MMRP) at the former Raritan Arsenal, Edison, NJ.

One of the current assignments included providing surveying for Area 12 of the former Raritan Arsenal, an 85-acre parcel located along the Raritan River in Edison, NJ for Digital Geophysical Mapping. BANC3 performed field reconnaissance, established survey control baselines, GPS Surveys tied to NGS monuments for relation to NJ SPC NAD83 and NAVD88, performed control surveys for a 1 acre grid layout, performed locations of soil borings, monitoring wells, Blind Positioning Seed Items, Geophysical Prove Out locations, and preparation of finished survey drawings. Project included re-establishing existing grid lines and relation of prior set points. Deliverables included survey plan in the latest version of AutoCAD and AutoDesk LDD.



## FAA–Atlantic City Airport

BANC3 has been providing land surveying and other environmental support services to STV, Inc. and the FAA, William J. Hughes Technical Center for the development, review and implementation of area contingency plans pursuant to the expansions at Atlantic City International Airport, NJ.

Our current assignments included providing surveying for the TSL Permanent Explosives Area and Building 277 upgrades and expansions. BANC3 performed field reconnaissance, established survey control baselines, GPS Surveys tied to NGS monuments for relation to NJ SPC NAD83 and NAVD88, performed control ties to previous surveys and topographic surveys for both sites, performed locations of soil borings, monitoring wells, and preparation of finished survey drawings. Deliverables included survey plan in the latest version of AutoCAD and AutoDesk LDD.



## Department of Navy – Naval Support Facility Indian Head

BANC3 has been providing land surveying and other environmental support services to Naval Support Facility, Indian Head (NSF-IH) for the development, review and implementation of area contingency plans pursuant to the Indian Head Division, Naval Surface Warfare Center, Indian Head, MD

One of the current assignments includes providing surveying for CTO-5 within the Indian Head Naval Base, a 15-acre area located along the southeast side of the Potomac River in Indian Head, MD for Digital Geophysical Mapping. BANC3 performed field reconnaissance, established survey control baselines, GPS Surveys tied to NGS monuments for relation to NJ SPC NAD83 and NAVD88, performed control surveys for the former landfill site, performed locations of soil borings, monitoring wells, and preparation of finished survey drawings. Deliverables included survey plan in the latest version of AutoCAD and AutoDesk LDD.



## GSA – Pennsylvania Judicial Center

BANC3 has been providing construction management services, as a sub-consultant, for the construction of an approximately 425,000 sq. ft. office and court building for the Unified Judicial System of Pennsylvania, including approximately 95,000 sq. ft. of parking garage in Harrisburg, PA. The construction cost is estimated to be \$95M. BANC3's services include providing construction management for the project. The work entails daily field inspection, reports, schedule monitoring, coordination, plans and specification conformance, and contract compliance.



# PROJECTS (Partial List)



*Client: Department of Defense  
Location: Picatinny Arsenal, NJ  
Services: Survey*



*Client: Delaware River Port Authority  
Location: Camden, NJ  
Services: Environmental Engineering*



*Client: NJDPMC  
Location: Trenton, NJ  
Services: Survey & Civil Engineering*



*Client: PIDC  
Location: Philadelphia, PA  
Services: Environmental Engineering*



*Client: NJSCC  
Location: Gloucester, NJ  
Services: Construction Management*



*Client: City of Trenton  
Location: Trenton, NJ  
Services: Resident Engineering*



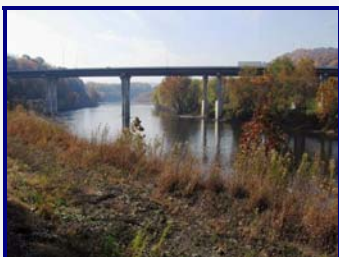
*Client: NJDPMC  
Location: 5 NJ locations  
Services: Civil Engineering & Survey*



*Client: NYCSCA  
Location: New York, NY  
Services: Construction Management*



*Client: NJDEP  
Location: Newark, NJ  
Services: Survey*



*Client: Delaware Joint Toll Bridge Com.  
Location: Morrisville, PA  
Services: Survey*



*Client: NJEDA  
Location: Newark, NJ  
Services: Environmental Engineering*



*Client: DASNY  
Location: South Beach Psych. Hospital, NY  
Services: Transportation Engineering*